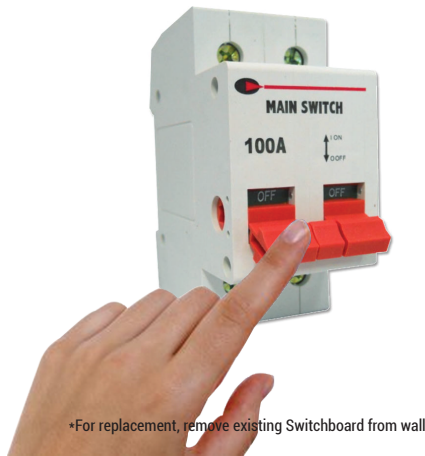


# Installation Guide

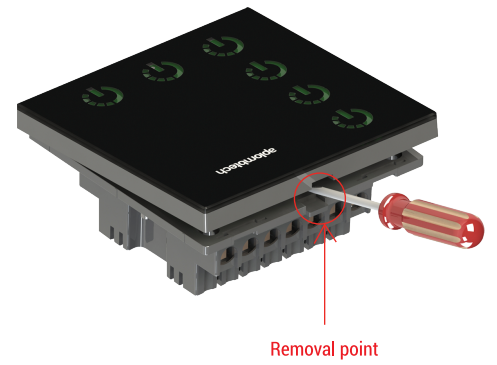
## SMART SWITCH

### Touch Works

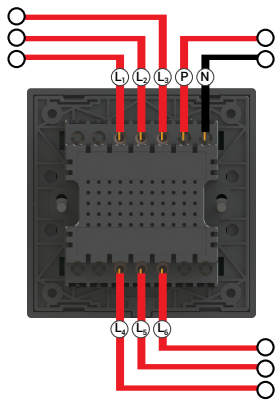
- > Identify three types of wire (Line, Neutral & several Loads)
- > **Main Power/ Circuit breaker/ Fuse must be switched off**
- > **Wiring Diagram (See Page 10)**
- > **Wiring Diagram (See Page 10)**



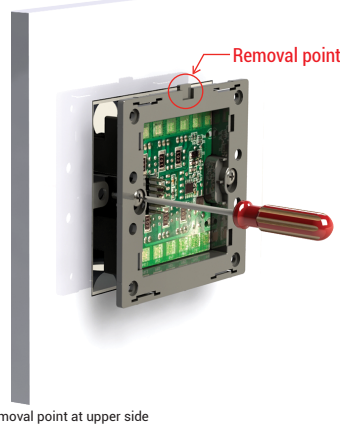
- > Twist to remove touch panel from base with small screwdriver
- > **Wiring Diagram (See Page 10)**



- > Wire up Line, Neutral and Load according to base marking
- > **Wiring Diagram (See Page 10)**



- > Mount the base of smart Switchboard into the wall with 86 type screw cassette
- > **Wiring Diagram (See Page 10)**



- > Place the lower corner part of the base with touch panel
- > **Wiring Diagram (See Page 10)**



- > Place the touch panel over the base & slightly push it
- > **Wiring Diagram (See Page 10)**



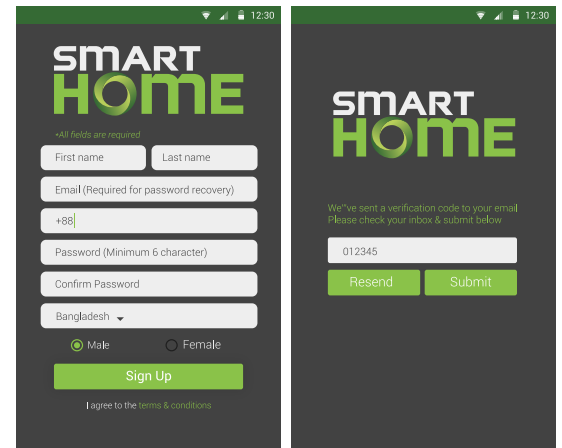
Bluetooth 4.0 & above  
Available on the iPhone  
**App Store**  
iOS 8.4 and above  
ANDROID APP ON  
**Google play**  
Android 4.4 and above



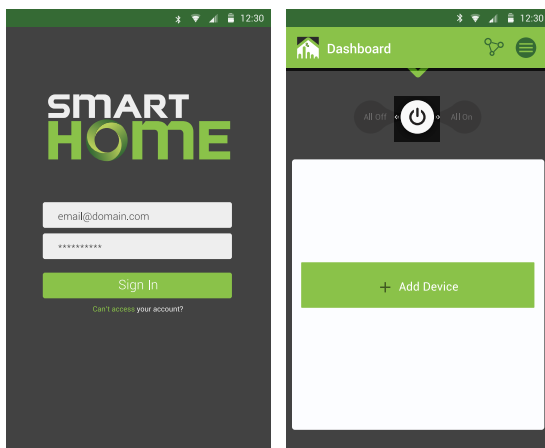
Smart Home  
App User Manual



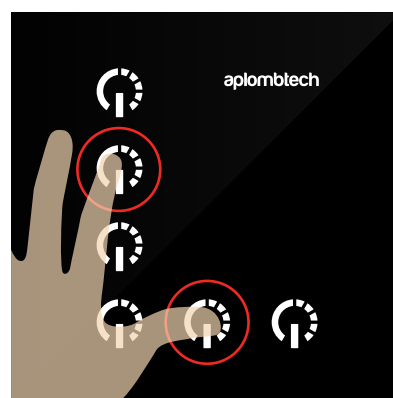
- > Enable internet connection, download Smart Home app and Sign Up
- > A verification code will be sent to your registered email address, enter the code and submit



- > Turn **ON Bluetooth** and Sign In with your registered email address and password

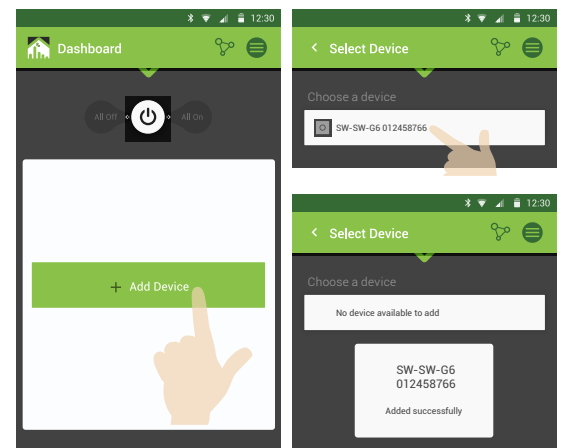


- > Before adding device, tap and hold switch 2 & 5 of installed Smart Switchboard at a time for 2 seconds to start discovery mode





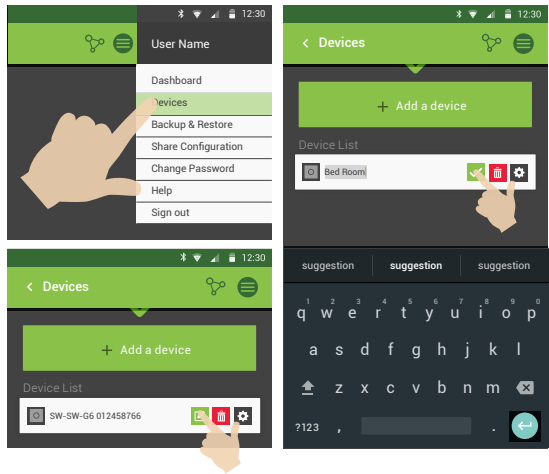
• Switch indicator (LED) will blink sequentially to confirm discovery mode

- > Wait till app get connected (📶) with Smart Home network
- > Tap **Add a device**, device will be searched & shown
- > Now tap on the device to add




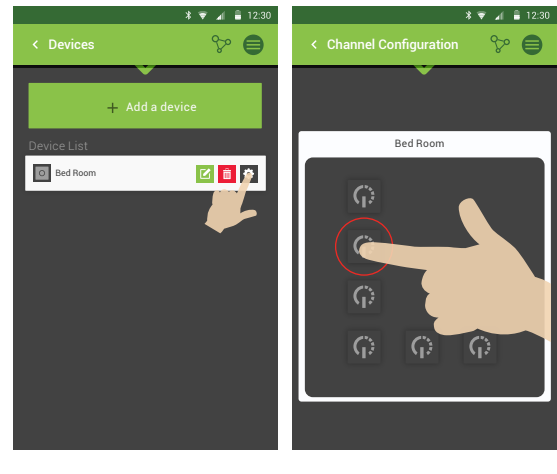
• Make sure installed Smart Home app is within 30 meters range of BLE Device

> Go to **Menu** , select **Devices** and tap **Edit**  to rename added device



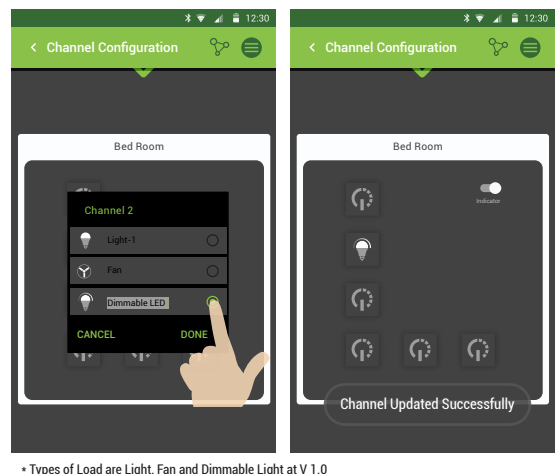
13

> Tap **Settings** , select any channel to configure/assign Load



14

> Select Load type and rename, tap **Done** button to configure/assign Load

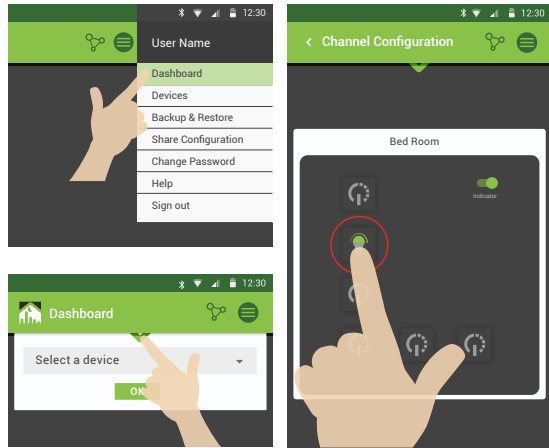


• Types of Load are Light, Fan and Dimmable Light at V 1.0  
• Other channels can also be configured with different Loads in this way

15

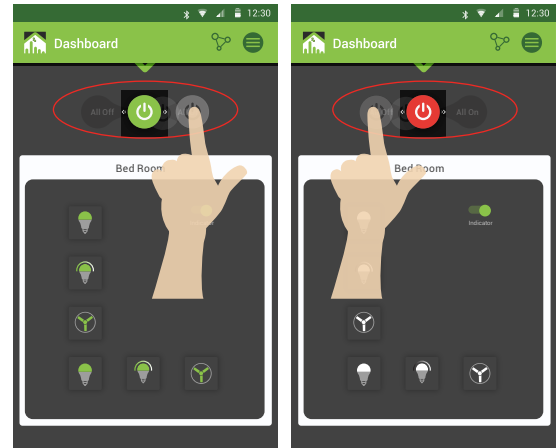
> To control Loads, go to **Dashboard**, select Switchboard by sliding or using top selection menu

> Tap on the Load icon to turn **ON/OFF**



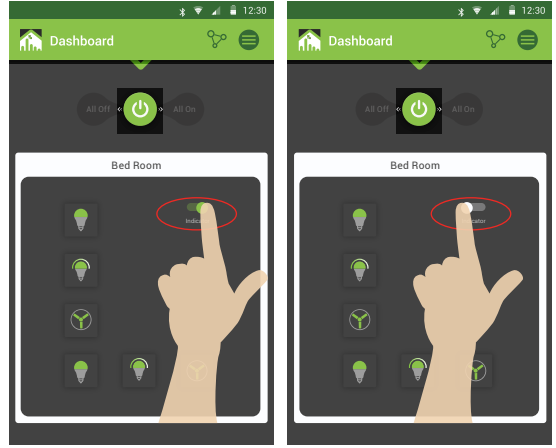
16

> Swipe **Global ON/OFF** button to control all the Loads at a time



17

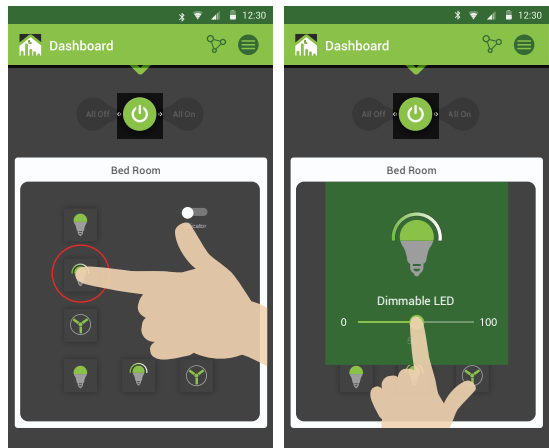
> Tap **Indicator** icon to turn **ON/OFF** the indicators of Switchboard




18

> Double tap on **Fan/Dimmable Load** icon to open control view

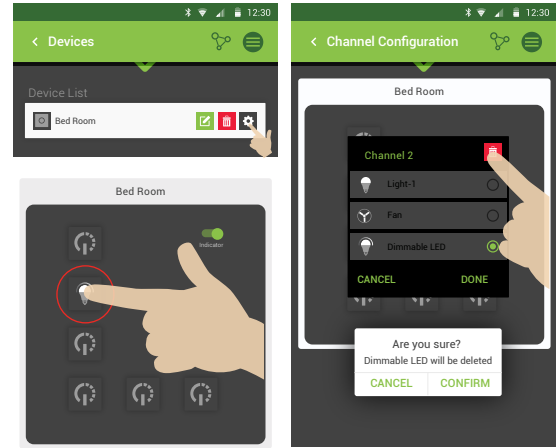
> Slide progress bar to change speed/brightness



19

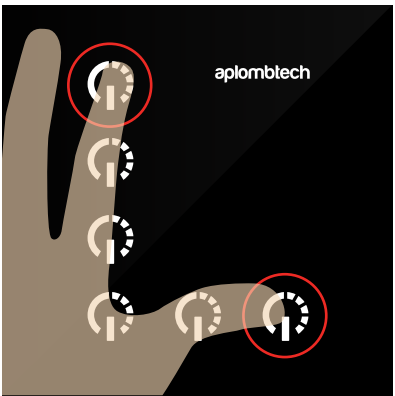
> To delete any Load, go to **Menu > Devices > Settings** 

> Select already assigned Load, then tap **Delete** icon and **Confirm**



20

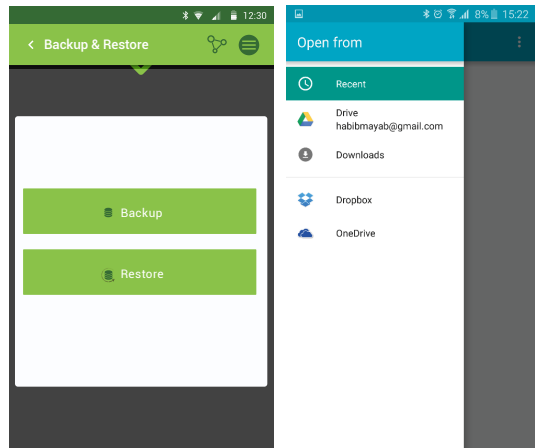
> To Delete/Dissociate device manually (Hardware reset), tap and hold switch/channel 1 & 6 of Smart Switchboard at a time for 2 seconds



• Switch indicators will blink sequentially to confirm deletion/dissociation

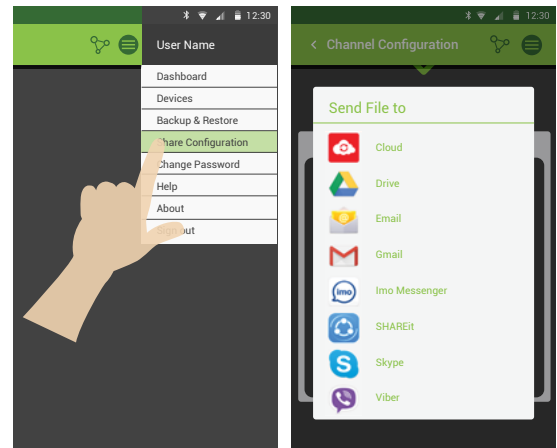
21

> To save configuration, go to **Menu > Backup & Restore**, tap on **Backup**. To restore, tap on **Restore** & then select saved file from directory



22

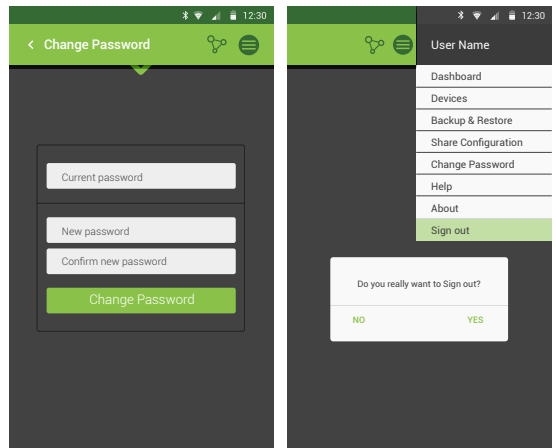
> For providing access to other users, select **Share Configuration** from **Menu**



•Other users need to restore shared configuration to control devices

23

> Password change and sign out from Smart Home app



24